



Every drop of water counts

MOROCCAN MANUFACTURE OF PUBLIC EQUIPMENT A.S.



2022 CATALOG

*Every drop of water
counts ...*



Follow our news



About Us

Market leader in water and environmental solutions for 27 years.

With an industrial vocation, we produce PE and PVC pipes as well as the assembly and calibration of water meters, located in Had Soualem in Morocco, our factory has a state-of-the-art technological tool and a high production capacity .

Thanks to this proven expertise in water metering, Alma offers solutions to improve drinking water networks, enabling its partners to increase their efficiency and improve their carbon footprint.

Motivated by a keen sense of responsibility and citizenship, and aware of its role as the main operator of the water industry in Morocco, Alma works on a daily basis with all its partners to protect Morocco's water needs with equipment meeting the highest standards.

Always aware of its responsibilities, Alma has always considered quality as an engine of growth for the company and is certified NM ISO 9001, it is equipped with two laboratories with the latest technology and high precision tools, its Laboratory calibration of water meters is accredited according to NM ISO/CEI 17025.

Driven by this diversified dynamic, Alma manufactures and offers innovative and complete solutions for drinking water, sanitation and water treatment networks, as well as telecommunications networks.





VALUES



Our values

QUALITY

We see quality as the engine of business growth and we support all our efforts to perpetuate the brand through quality control and certification.

DUTY

We are proud to support most companies in their field of activity, whether it is drinking water supply, sanitation or dry networks.
Training in new products and methods remains a debt to our partners.

EXPERIENCE

Our team has reached a level of professionalism that makes us the leader in water connections in the latest drinking water supply chain.

ASSIGNMENT

Our primary assignment is to offer products with technical solutions to meet market needs, at the best price with a commercial service that meets your expectations.

INNOVATION

We are proud to offer you innovative production solutions.

ENVIRONMENT

We ensure respect for the environment by producing 100% recyclable tubes, waste sorting, reducing energy consumption by favoring the use of renewable energies (installation of a photovoltaic solar power plant of 772,3KWp)

QUALITIES



Qualities

Alma is committed to setting up a quality management system according to the NM ISO 9001 standard, based on the following axes:

- Listening to our customers and meeting their requirements..
- Ensure compliance with legal and regulatory requirements..
- Become an industrial reference and a major player in the service of the water and sanitation businesses thanks to technological monitoring and continuous development..
- Improve our internal organization and develop the skills of our employees..
- Ensure the effectiveness of our management system and its continuous improvement. The water meter calibration laboratory is accredited in accordance with the standard: NM ISO/CEI 17025..



Index



Drinking water supply

WATER METER	13-14
VALVES AND ACCESSORIES	15
BRASS FITTINGS	16-19
CAST IRON FITTINGS	20-26
PRESSURE FITTINGS	27-28
PE100 PIPE	29



Sanitation

DOUBLE WALL CORRUGATED HDPE PIPE	32
PVC PIPE	33
HDPE/PVC FITTING	34-35
Road Cast Iron Manhole	36



DRY NETWORKS

PVC SHEATHS	38
HDPE SHEATHS	39
HDPE OPTICAL FIBER SHEATHING	40



DRINKING WATER SUPPLY





WATER METER



Alma offers a wide range of water meters whether in terms of technology (speed, volumetric, large caliber) or in terms of caliber (DN 15mm to 500mm), with high precision to satisfy the needs of our customers.

The water meters offered by ALMA comply with the standards:

- MOROCCAN standard : NM 15.5.016
- Standard EN14154
- OIML R49-1, 2 et 3 recommendations

Large caliber meter: WP-SDC



- R80
- With a Turbine Woltman
- Pressure max PN16
- IP68 Protection
- Ductile Iron Body with epoxy coating
- Meets ISO 4064
- **Option:** pulse transmitter

DN	50	65	80	100	125	
Ref	WPSDCDN050	WPSDCDN065	WPSDCDN080	WPSDCDN100	WPSDCDN125	
DN	150	200	250	300	400	500
Ref	WPSDCDN150	WPSDCDN200	WPSDCDN250	WPSDCDN300	WPSDCDN400	WPSDCDN500

Volumetric meter: PD-SDC



- R160 /400
- With a magnetic transmission
- With a dry register
- **Option :** pulse transmitter

DN	15	20	32	40
Ref	PDSDC15MM	PDSDC20MM	PDSDC30MM	PDSDC40MM

Large caliber meter: WPD



- R100-315
- With a Turbine Woltman
- Pressure max PN16
- IP68 Protection
- Ductile Iron Body with epoxy coating
- Meets ISO 4064
- **Option:** pulse transmitter

DN	50	65	80	100	125	150	200
Ref	WPD050	WPD065	WPD080	WPD100	WPD125	WPD150	WPD200

Velocity meter : MJ-LFC



- R160
- Type : multi-jet
- With semi-wet register
- **Option :** Pulse transmitter

DN	15	20	32	40
Ref	MJLFC15MM	MJLFC20MM	MJLFC32MM	MJLFC40MM

Large caliber meter: WP-SDC PLUS



- R250-400
- With a Turbine Woltman
- Pressure max PN16
- IP68 Protection
- Ductile Iron Body with epoxy coating
- Meets ISO 4064
- **Option:** pulse transmitter

DN	65	80	100	150
Ref	WPSDCDN65PLUS	WPSDCDN80PLUS	WPSDCDN100PLUS	WPSDCDN150PLUS

Velocity meter: SJ-SDC PLUS



- R160
- **Type :** single-jet
- With a magnetic transmission and dry register
- **Option :** pulse transmitter

DN	15
Ref	SJSDC15MM

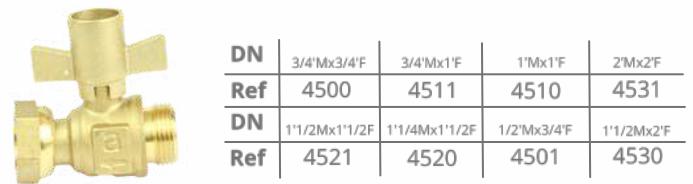
Alma offers a large choice of valves (straight, angle, etc.) that meet the requirements of the standards:

- **Brass Body CW602N-CuZn36Pb2**
- **Pressure max PN16**

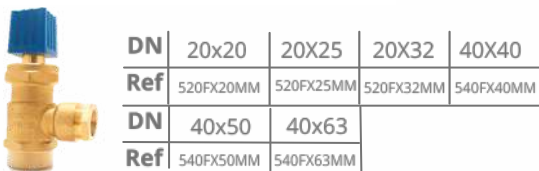
lateral Connection Ball Valve PE Compression End



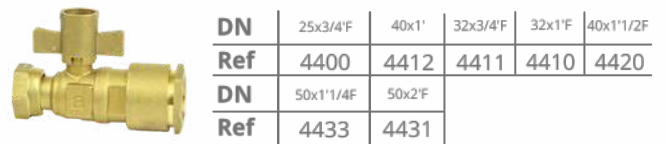
Straight lockable ball valve M/F



vertical Connection Ball Valve PE Compression End



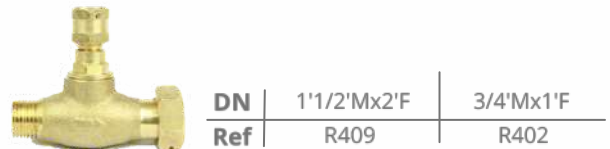
Straight lockable ball valve PE/F



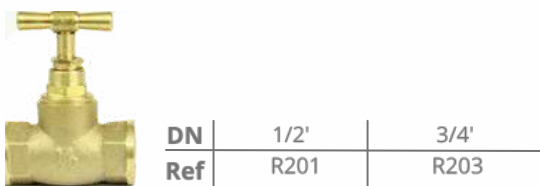
Straight meter stop valve M/F



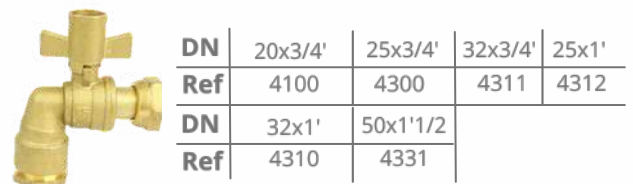
Straight stop cock with cover head



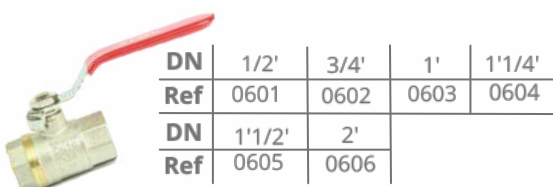
Straight meter stop valve F/F



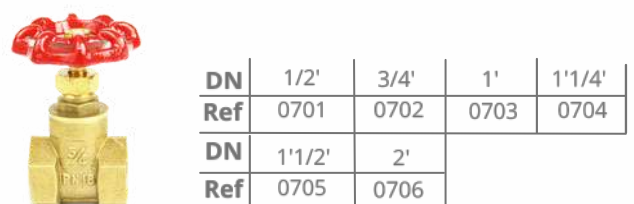
Angled lockable ball valve



Ball valve



Globe valve



ACCESSORIES

FOR WATER METER

wall mounted water meter box : small/large model

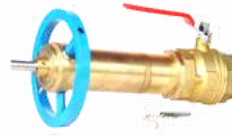


- Fiberglass reinforcement of polyester
- Light grey color, RAL7035
- 180° opening
- Galvanized sheet rail

Box	Small model	Large model
Ref	CFLYDECPM	CFLYDECGM

FOR BUILDING ACCESSORIES

Pipe drilling machine



- Simple and robust for the execution of drill on cast iron pipes for water supply connections.

DN	For connexion valves DN 20 and 40
Ref	599

Anti-tamper seal



- Polyethylene
- Anti-fraud
- Possibility of personalized marking
- Possibility to engrave a serial number
- Several colors available upon request

DN	15	20	32	40
Ref	BGB15	BGB20	BGB30	BGB40

wall mounted box : Small/Large model



- Fiberglass reinforcement of polyester
- Dark gray color
- 180° opening

DN	420x295	525x500
Ref	PNXPM	PNXGM

Active and passive sensors



- Reed contactor: 100, 1000 and 10.0001/imp
- Opto pulse generator: 1 and 10 1/imp
- The NAMUR inductive pulse generator: 1 and 10 1/im

Sensors	15
Ref	CAPT

Tabernacle



- Polyethylene
- Blue color

DN	ENTRY DN 75
Ref	TAB 75

BRASS FITTING

Brass fittings provide reliable, leak-free connection solutions for most high-pressure, high-temperature for hydraulic applications.

- Brass CW602N-CuZn36Pb2
- Tapped or threaded according to pitch gas ISO 228-1
- PN16
- Use for general plumbing

water meter coupling



DN	15	20	30	40	50
Ref	001C	002C	003C	004C	005C

male-female reduction ring



DN	3/4'x1/2'	1'x3/4'	1'x1/2'
Ref	0552	0553	0554



Reducing union

DN	1/2F x 3/4M	1/2F x 1"M	1/2F x 1"1/4M
ref	05601	05602	05603
DN	1/2F x 1"1/2M	1/2F-2"M"	1/2F-2"1/2M"
ref	05604	05605	05606
DN	3/4F-1"1/4M"	3/4F-1"1/2M"	3/4F-2"1/2M"
ref	05607	05608	05609
DN	1"1/4F-1"1/4M"	1"1/4F-1"1/2M"	1"1/4F-2"1/2M"
ref	05610	05611	05612
DN	1"1/4F-1"1/2M"	1"1/4F-2"1/2M"	1"1/2 F x 2"1/2M"
ref	05613	05614	05615

Equal hexagon nipple M-M



DN	1/2'	3/4'	1'	1'1/4'	1'1/2'	2'
Ref	020	0201	0202	0203	0204	0205

Tee



DN	1'1/2	2'
Ref	0248M	0249M

Male cap



DN	1/2'	3/4'	1'
Ref	RET35	RET34	RET351

Non-return valve



DN	1/2'	3/4'	1'	1'1/4'	1'1/2'
Ref	031	032	033	034	035

QUICK RELEASE BRASS FITTINGS

Quick-release connection with full-pass clamping nut makes it possible to achieve by mechanical tightening the connection between the PE pipe with a threaded body

- Brass CW602N-CuZn36Pb2
- Equipped with an EN 681-1 rubber O-ring
- Equipped with claw ring and anti-friction ring and brass nut CW602N-CuZn36Pb2
- PN16

Equal elbow PE



DN	20x20	25x25	32x32	40x40	50x50	63x63
Ref	0702X	0712X	0722X	0732X	0742X	0752X

Male /PE fitting



DN	20x1/2'	25x1/2'	25x3/4'	32x1/2'	32x3/4'	32x1'
Ref	070M	0711M	071M	07211M	07212M	072M
DN	40x1'1/4	50x1'1/4	50x1'1/2	50x2'	63x1'1/2	63x2'
Ref	073M	07413M	074M	07415M	07514M	075M

PE/male elbow



DN	20x1/2'	25x1/2'	25x3/4'	32x1/2'	32x3/4'	32x1'
Ref	0702M	07122M	0712M	07222M	07221M	0722M
DN	40x1'1/4	50x1'1/4	50x1'1/2	63x2'		
Ref	0732M	07423M	0742M	0752M		

Female/PE fitting



DN	20x1/2'	25x1/2'	25x3/4'	32x1/2'	32x3/4'	32x1'
Ref	070F	0711F	071F	07211F	07212F	072F
DN	40x1'1/4	40x3/4'	50x1'1/4	50x1'1/2	50x2'	63x2'
Ref	073F	07313F	07413F	074F	07415F	075F

Female elbow / PE



DN	20x1/2'	25x1/2'	25x3/4'	32x1/2'	32x3/4'	32x1'
Ref	0702F	07121F	0712F	07221F	07222F	0722F
DN	40x1'1/4	40x3/4'	50x1'1/4	50x1'1/2	63x2'	
Ref	0732F	07322F	07423F	0742F	0752F	

Equal TEE PE



DN	20	25	32	40	50	63
Ref	0703X	0713X	0723X	0733X	0743X	0753X



QUICK RELEASE BRASS FITTINGS

Male /PE Tee



DN	20X1/2"x20	25X1/2"x25	25X3/4"x25	32X1"x32
Ref	0703M	07131M	0713M	0723M
DN	40x1'1/4x40	50x1'1/2x50	63x2'x63	
Ref	0733M	0743M	0753M	

Female /PE Tee



DN	20X1/2"x20	25X1/2"x25	25X3/4"x25	32X1"x32	32X3/4"x32
Ref	0703F	07131F	0713F	0723F	07232F
DN	40x1'1/4x40	40x3/4'x40	50x1'1/2x50	63x2'x63	
Ref	0733F	07342F	0743F	0753F	

repair sleeve



DN	25	32	40	50
Ref	071XR	072XR	073XR	074XR

PE equal sleeve



DN	20	25	32	40	50	63	75	90
Ref	070X	071X	072X	073X	074X	075X	076X	077X

CAST IRON FITTINGS

The accessories are essential components for the proper functioning of a hydraulic network. Alma offers its customers a wide range of cast iron accessories that meet market requirements and current standards.

- Ductile iron body
- Max pressure PN16

Wide Tolerance Adapter



DN	50/65	80	100	150
Ref	ADLTDN065	ADLTDN080	ADLTDN100	ADLTDN150
DN	200	250	300	400
Ref	ADLTDN200	ADLTDN250	ADLTDN300	ADLTDN400

Y filter



DN	50	65	80	100
Ref	FY050	FY065	FY080	FY100
DN	125	150	200	250
Ref	FY125	FY150	FY200	FY250
DN	300	400	500	
Ref	FY300	FY400	FY500	

Gibault joint for PVC pipe



DN	63	75	90	110
Ref	JGPVCDN063	JGPVCDN075	JGPVCDN090	JGPVCDN110
DN	125	140	160	200
Ref	JGPVCDN125	JGPVCDN140	JGPVCDN160	JGPVCDN200
DN	225	250	315	400
Ref	JGPVCDN225	JGPVCDN250	JGPVCDN315	JGPVCDN400
DN	500			
Ref	JGPVCDN500			

Gate valve F4/F5



DN	50	60/65	80
Ref	F4-SDIN3352X050	F4-SDIN3352X065	F4-SDIN3352X080
DN	125	150	200
Ref	F4-SDIN3352X125	F4-SDIN3352X150	F4-SDIN3352X200
DN	250	300	400
Ref	F4-SDIN3352X250	F4-SDIN3352X300	F4-SDIN3352X400

Wide tolerance fitting



DN	50	65	80	100
Ref	RACLTDN050	RACLTDN065	RACLTDN080	RACLTDN100
DN	150	200	250	300
Ref	RACLTDN150	RACLTDN200	RACLTDN250	RACLTDN300
DN	400			
Ref	RACLTDN400			

Dismantling Joint



DN	60	80	100
Ref	JDDN060MM	JDDN080MM	JDDN100MM
DN	125	150	200
Ref	JDDN125MM	JDDN150MM	JDDN200MM
DN	250	300	400
Ref	JDDN250MM	JDDN300MM	JDDN400MM
DN	500	600	
Ref	JDDN500MM	JDDN600MM	

CAST IRON FITTINGS

S-3D Flow Straightener



DN	50	60/65	80	100
Ref	STAB050	STAB050x65	STAB080	STAB100
DN	150	200	300	
Ref	STAB150	STAB200	STAB300	

Saddle clamp for PVC



DN	40	50	63	75
Ref	CPEC040x20(40)PVC	CPEC050	CPEC063	CPEC075
DN	90	110	125	140
Ref	CPEC090	CPEC110	CPEC125	CPEC140
DN	160	200	225	250
Ref	CPEC160	CPEC200	CPEC225	CPEC250
DN	350			
Ref	CPEC350			

MAJOR flange adaptor for PVC



DN	50	50/65	80	100
Ref	BMDN050PVC	BMDN060PVC	BMDN080PVC	BMDN100PVC
DN	150	200	300	400
Ref	BMDN150PVC	BMDN200PVC	BMDN300PVC	BMDN400PVC

Swing Check Valve



DN	50	65	80	100
Ref	CLAPBATDN050	CLAPBATDN065	CLAPBATDN080	CLAPBATDN100

MAJOR STOP flange adaptor for PE PIPES



DN	50	63	75	90
Ref	BMVDN050PE	BMVDN050/060PE	BMVDN060PE	BMVDN080PE
DN	110	225		
Ref	BMVDN100PE	BMVDN200PE		

Double swing valve



DN	65	80	100
Ref	CLAPDBATDN065	CLAPDBATDN080	CLAPDBATDN100
DN	150	200	
Ref	CLAPDBATDN150	CLAPDBATDN200	

MAJOR flange adaptor for cast iron



DN	50	50/65	80	100
Réf	BMDN050FD	BMDN060FD	BMDN080FD	BMDN100FD
DN	150	200	300	400
Réf	BMDN150FD	BMDN200FD	BMDN300FD	BMDN400FD

Ball Check Valve



DN	80	100	125	150
Ref	CLAPBDN080	CLAPBDN100	CLAPBDN125	CLAPBDN150
DN	200	250	300	
Ref	CLAPBDN200	CLAPBDN250	CLAPBDN300	

CAST IRON FITTINGS

Adjustment 'S' Bend



DN	100
Ref	S/REGL/100

Fire Hydrant



DN	100
Ref	PIDN100

Single Air Valve



DN	40	65
Ref	VENTSFDN40MM	VENTSFDN65MM

Double Orifice air valve



DN	65	80	100
Ref	VENTTFDN065	VENTTFDN080	VENTTFDN100

CAST IRON FITTINGS

Saddle clamp for AC



DN	60	80	100	125
Ref	CPEC060x20(40)AC	CPEC080	CPEC100	CPEC125
DN	150	200	250	300
Ref	CPEC150	CPEC200	CPEC250	CPEC300
DN	350	400		
Ref	CPEC350	CPEC400		

double socket bend
1/4 -1/8 -1/16 -1/32



DN	63	75	
Ref	C1X4(8,16,32)EMB063	C1X4EMB075	C1X4EMB090
DN	110	160	200
Ref	C1X4EMB110	C1X4EMB160	C1X4EMB200
DN	225	250	315
Ref	C1X4EMB225	C1X4EMB250	C1X4EMB315
DN	400		
Ref	C1X4EMB400		

¼ Duckfoot Bend



DN	100
Ref	C1X4APATIN

Loose flange elbow
1/4-1/8 -1/16 -1/32



DN	40	50	60/65
Ref	C1X4(8,16,32)BM040	C1X4BM050	C1X4BM060
DN	80	100	125
Ref	C1X4BM080	C1X4BM100	C1X4BM125
DN	150	200	250
Ref	C1X4BM150	C1X4BM200	C1X4BM250
DN	300	400	
Ref	C1X4BM300	C1X4BM400	

Basket Type Strainer



DN	50	65	80	100	125	150	200	300
Ref	FCREPO5OTAM	FCREPO65TAM	FCREPO80TAM	FCREP100TAM	FCREP125TAM	FCREP150TAM	FCREP200TAM	FCREP300TAM

Double sockets tee with loosing flanged branch



DN	63x60	75x60	90x60	90x80	110x80	110x60	110x100	160x60
Ref	TBEMB063X60	TBEMB075X60	TBEMB090X60	TBEMB090X80	TBEMB110X80	TBEMB110X60	TBEMB110X100	TBEMB160X60
DN	160x80	160x100	160x150	200x60	200x80	200x100	225x60	225x80
Ref	TBEMB160X80	TBEMB160X100	TBEMB160X150	TBEMB200X60	TBEMB200X80	TBEMB200X100	TBEMB225X60	TBEMB225X80
DN	225x100	225x150	225x200	250x60	250x80	250x100	250x150	315x60
Ref	TBEMB225X100	TBEMB225X150	TBEMB225X200	TBEMB250X60	TBEMB250X80	TBEMB250X100	TBEMB250X150	TBEMB315X60
DN	315x80	315x100	315x150	315x200	315x300	400x80	400x100	400x150
Ref	TBEMB315X80	TBEMB315X100	TBEMB315X150	TBEMB315X200	TBEMB315X300	TBEMB400X80	TBEMB400X100	TBEMB400X150
DN	400x200	400x300	400x400					
Ref	TBEMB400X200	TBEMB400X300	TBEMB400X400					

Loose flanged reducer



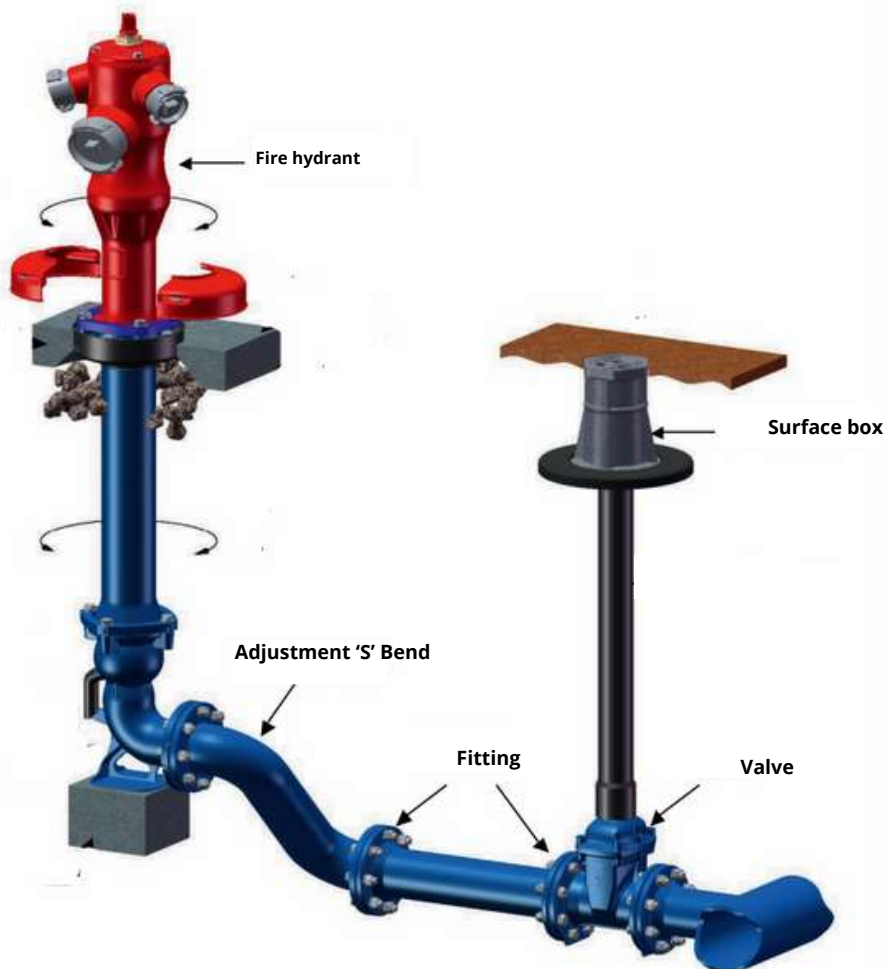
DN	50x40	65x40	65x50	80x50	80x60/65	100x60/65	100x80	125x60/65
Ref	RCBM050X40	RCBM065X40	RCBM065X50	RCBM080X50	RCBM080X60/65	RCBM100X60/65	RCBM100X80	RCBM125X60/65
DN	125x80	125x100	150x60/65	150x80	150x100	150x125	200x60/65	200x80
Ref	RCBM125X80	RCBM125X100	RCBM150X60/65	RCBM150X80	RCBM150X100	RCBM150X125	RCBM200X60/65	RCBM200X80
DN	200x100	200x125	200x150	250x100	250x150	250x200	300x100	300x150
Ref	RCBM200X100	RCBM200X125	RCBM200X150	RCBM250X100	RCBM250X150	RCBM250X200	RCBM300X100	RCBM300X150
DN	300x200	300x250	400x200	400x300				
Ref	RCBM300X200	RCBM300X250	RCBM400X200	RCBM400X300				

CAST IRON FITTINGS

Loose flanged tee



DN	40x40	50x40	50x50	65x40	65x50	65x65	80x40	80x50
Ref	T3B040X40	T3B050X40	T3B050X50	T3B065X40	T3B065X50	T3B065X65	T3B080X40	T3B080X50
DN	80x65	80x80	100x40	100x50	100x65	100x80	100x100	125x40
Ref	T3B080X65	T3B080X80	T3B100X40	T3B100X50	T3B100X65	T3B100X80	T3B100X100	T3B125X40
DN	125x50	125x65	125x80	125x100	125x125	150x40	150x50	150x65
Ref	T3B125X50	T3B125X65	T3B125X80	T3B125X100	T3B125X125	T3B150X40	T3B150X50	T3B150X65
DN	150x80	150x100	150x150	200x40	200x50	200x60/65	200x80	200x100
Ref	T3B150X80	T3B150X100	T3B150X150	T3B200X40	T3B200X50	T3B200X60/65	T3B200X80	T3B200X100
DN	200x150	200x200	250x60	250x80	250x100	250x125	250x200	300x60/65
Ref	T3B200X150	T3B200X200	T3B250X60	T3B250X80	T3B250X100	T3B250X125	T3B250X200	T3B300X60/65
DN	300x80	300x100	300x150	300x200	300x300	400x80	400x100	400x150
Ref	T3B300X80	T3B300X100	T3B300X150	T3B300X200	T3B300X300	T3B400X80	T3B400X100	T3B400X150
DN	400x200	400x300	400x400					
Ref	T3B400X200	T3B400X300	T3B400X400					



CAST IRON FITTINGS

Steel flange PN10 DIN2576



DN	50	65	80	100
Ref	BACIERDN50	BACIERDN65	BACIERDN80	BACIERDN100
DN	125	150	200	250
Ref	BACIERDN125	BACIERDN150	BACIERDN200	BACIERDN250
DN	300	400	500	600
Ref	BACIERDN300	BACIERDN400	BACIERDN500	BACIERDN600
DN	800	1000		
Ref	BACIERDN800	BACIERDN1000		

Socket reducer



DN	75x63	90x63	90x75
Ref	REDEMB075x63	REDEMB090x63	REDEMB090x75
DN	110x75	110x90	160x90
Ref	REDEMB110x75	REDEMB110x90	REDEMB160x90
DN	160x110	200x160	225x110
Ref	REDEMB160x110	REDEMB200x160	REDEMB225x110
DN	225x160	250x200	315x160
Ref	REDEMB225x160	REDEMB250x200	REDEMB315x160
DN	315x225	315x250	
Ref	REDEMB315x225	REDEMB315x250	

Blind flange



DN	65	80	100	150
Ref	PLPLEINEDN065	PLPLEINEDN080	PLPLEINEDN100	PLPLEINEDN150
DN	200	250	300	400
Ref	PLPLEINEDN200	PLPLEINEDN250	PLPLEINEDN300	PLPLEINEDN400

All socket tee



DN	75x63x75	90x63x90	90x63x90
Ref	TEEMB075x63	TEEMB090x63	TEEMB090x63
DN	110x63x110	110x75x110	110x90x110
Ref	TEEMB110x63	TEEMB110x75	TEEMB110x90
DN	160x63x160	160x75x160	160x90x160
Ref	TEEMB160x63	TEEMB160x75	TEEMB160x90
DN	160x110x160		
Ref	TEEMB160x110		

Loose Flange Bend



DN	80	100	150
Ref	MANCHBDN080	MANCHBDN100	MANCHBDN150
DN	200	300	400
Ref	MANCHBDN200	MANCHBDN300	MANCHBDN400

Equal all socket tee




DN	63	75	90	110
Ref	TEEMB063x63	TEEMB075x75	TEEMB090x90	TEEMB110x110
DN	160	200	225	250
Ref	TEEMB160x160	TEEMB200x200	TEEMB225x225	TEEMB250x250

PRESSURE FITTING

In partnership with the World Leader,



Alma offers you a large choice of fittings that meet the requirements of national and international standards to meet the needs of water authorities and pipelines, and with the Certificate of Sanitary Compliance 

SERIE 1 couplers



- A new generation coupler, snap-on for the assembly of pressure pipes, and of the PE/PE, PE/PVC and PE/copper type.
- Nominal pressure: PN16
- Diameters: from DN20mm to DN 63mm
- Material: Polypropylene body, high grade copolymer, POM split ring and an NBR O-ring.
- Reference standard: ISO 14236

UNIVERSAL SLIP REPAIR COUPLING



- An innovative mechanical solution for the assembly and repair of all types of tubes.
- Nominal pressure: PN16
- Diameters: 7 references to cover from DN14 mm to DN 64mm
- Material: Polypropylene body, high quality copolymer, POM split ring and NBR seal.
- Reference standard: ISO 14236

Electrofusion fitting



- SMARTFUSE system for the connection of polyethylene pipes for water supply and for sewerage connections and collectors with pressure.
- Nominal pressure: PN16
- Diameters: from DN 20 mm to DN 315 mm
- Material: Body in black polyethylene PE 100, with resistance sheathed in PE and over-injected - Terminals 4 mm - Very wide hot and cold zones.
- Reference standards: NF EN 12201, AS/NZS 4129, WIS 4-32-14 and WIS 4-32-15

universel coupler NEO



- An optimized technical solution for bonding and permanent repair for all types of tubes.
- Nominal Pressure: PN 16 (or PN 10 FOR DN>200)
- Diameters: 22 references to cover from DN40 to DN400.
- Material: AISI 304L stainless steel body, AISI 304 stainless steel screws, AISI 304L stainless steel rods and EPDM seal.
- Application: Water, air and chemical products on request / T°: from -20 to +100°C

Compression fitting



- Mechanical couplings for assembling pressure pipes with DN less than or equal to 160.
- Nominal pressure: PN16
- Diameters: from DN 16 mm to DN 160mm
- Material: Body and Nut in Polypropylene, high grade copolymer, standard acetal split ring (POM) and NBR O-ring.
- Reference standards: ISO 14236 and AS/NZ 4129

Electrofusion Tooling



PE100 PIPE FOR DRINKING WATER

- PE100 pipes are high-density polyethylene, black with blue marking stripes in accordance with standard NM EN 12201-2 and with a certificate of sanitary compliance (ACS).
- Applications : for the supply, distribution and connection of drinking water in underground networks,
- Nominal pressure: PN16, PN20 and PN25.
- Manufactured in straight lengths or coils depending on the diameter, from DN 20 to DN 400.



ADVANTAGES :

- ✓ **Lightness and flexibility.**
- ✓ **Ease of implementation.**
- ✓ **Network longevity.**
- ✓ **Perfect sealing with electrofusion, mechanical fittings or butt welding.**
- ✓ **Hydraulic performance – low pressure drops and resistance to water hammer.**
- ✓ **Chemical, mechanical, abrasion and corrosion resistance.**
- ✓ **Totally recyclable.**

DIMENSION AND REFERENCE

DN	20	25	32	40	50
REF	TPEHDEP020PN	TPEHDEP025PN	TPEHDEP032PN	TPEHDEP040PN	TPEHDEP050PN
DN	63	75	90	110	125
REF	TPEHDEP063PN	TPEHDEP075PN	TPEHDEP090PN	TPEHDEP110PN	TPEHDEP125PN
DN	140	160	180	200	225
REF	TPEHDEP140PN	TPEHDEP160PN	TPEHDEP180PN	TPEHDEP200PN	TPEHDEP225PN
DN	250	280	315	355	400
REF	TPEHDEP250PN	TPEHDEP280PN	TPEHDEP315PN	TPEHDEP355PN	TPEHDEP400PN





SANITATION



DOUBLE WALL CORRUGATED HDPE PIPE

HOT IN-LINE INJECTION OF THE JUNCTION MUFF



- Double Wall Corrugated HDPE pipe (external black and internal blue) with an innovative technology of muff injection through an automatic bellling machine in extrusion line with the same material as that of the tube, in order to guarantee the homogeneity and perfect sealing with high mechanical resistance. It is intended for buried gravity networks, according to standard NM EN 13476-3.
- Stiffness class SN8 (NF EN ISO 9969).
- Overall straight length: 6m.

ADVANTAGES :

- ✓ Resistance to shock, abrasion, and corrosion.
- ✓ Resistance to cracking
- ✓ Resistance to U.V.
- ✓ Ductility and flexibility
- ✓ Lightness and Easy to handle
- ✓ Sealing and speed of implementation
- ✓ Reduced carbon footprint - 100% recyclable

DIMENSION ET RÉFÉRENCE:

DN/ID	200	250	300	400	500	600
REF	TAPEHD200/SN8	TAPEHD250/SN8	TAPEHD300/SN8	TAPEHD400/SN8	TAPEHD500/SN8	TAPEHD600/SN8



PVC PIPE



- Rigid PVC pipes (PVC-U) intended to convey wastewater, rainwater or industrial water by gravity, according to standard NM-EN1401.
- Stiffness class: SN2 (SERIE 2) and SN4 (SERIE 1)
- Overall straight length: 6m.

ADVANTAGES :

- ✓ Resistance to shock, abrasion, and corrosion.
- ✓ Tightness and speed of implementation.
- ✓ 100% recyclable.
- ✓ Flexibility.
- ✓ Customer satisfaction.

DIMENSION ET REFERENCE:

DN/OD	200	250	315	400	500
REF	TAPVC200/SN2(4)	TAPVC250/SN2(4)	TAPVC300/SN2(4)	TAPVC400/SN2(4)	TAPVC500/SN2(4)



HDPE FITTING

Alma offers a large choice of HDPE accessories for making wastewater connections that meet the requirements of the standards.



Elbow 45°



Connexion 45°



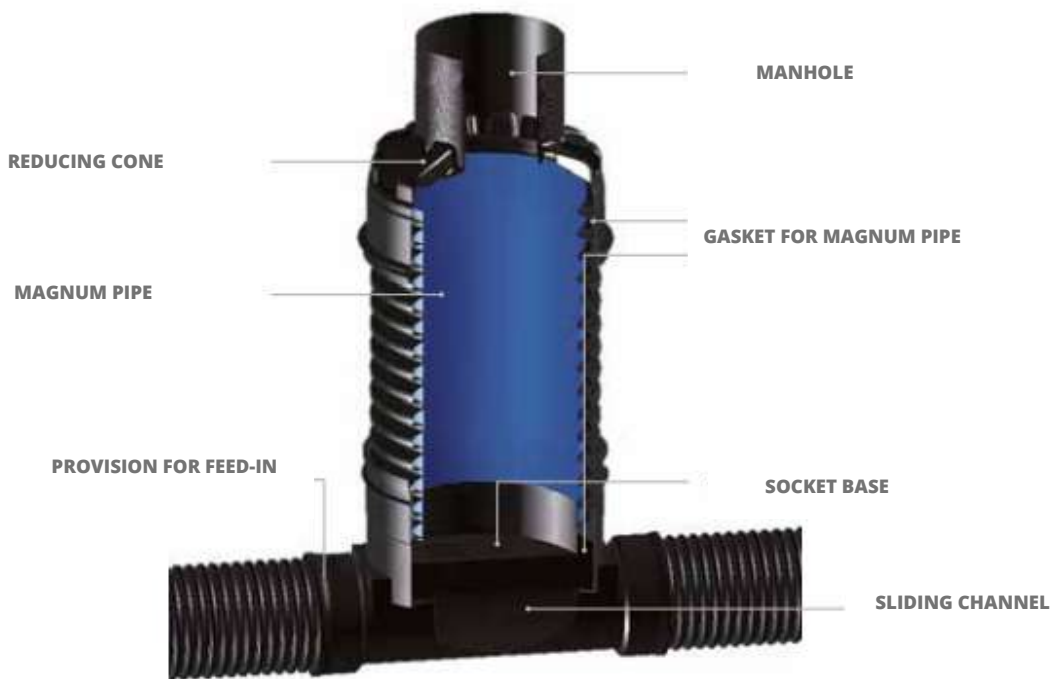
Muff



Elbow 90°



Tee 90°



PE Inspection chamber

For more information, please consult our sales department.

PVC FITTING

Alma offers a large selection of PVC accessories for making wastewater connections in sanitation that meet the requirements of the standards.

Saddle for connexion



DN	300	400
Ref	1A20058	1D20058

Inspection well



DN	315x200
Ref	TAB315x200

Elbow 45° /87°



DN	200/45°	200/87°
Ref	0712092	0702042

Check valve



DN	200
Ref	1552091



ROAD CAST IRON MANHOLE

Alma offers a large choice of road cast iron manhole devices that meet the requirements of the standards and the performance and quality criteria expected by customers in terms of resistance to traffic constraints:

- **Ductile iron body (ISO1083)**
- **Standardization: NM.10.9.001**

Medium Duty Manhole Cover



DN	850x850	850x850
Ref	TAMP850XC250	TAMP850XD400

Surface box in SMC



DN	For pipe 75
Ref	BACR75-SMC

Drain inlet with cover plate



DN	750x750
Ref	AVAL750XC250W

Square concave gully grating with frame



DN	700x700	800x800
Ref	GCV700XD400	GCV800XD400

Siphoidal device with frame



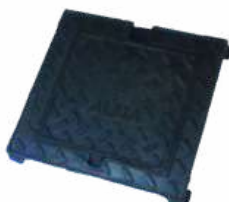
DN	500x500	750x750
Ref	SIPH500x500	SIPH750x750

Continuous gully grating



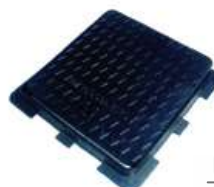
DN	750x400
Ref	GCAN750X400D400

Connexion manhole



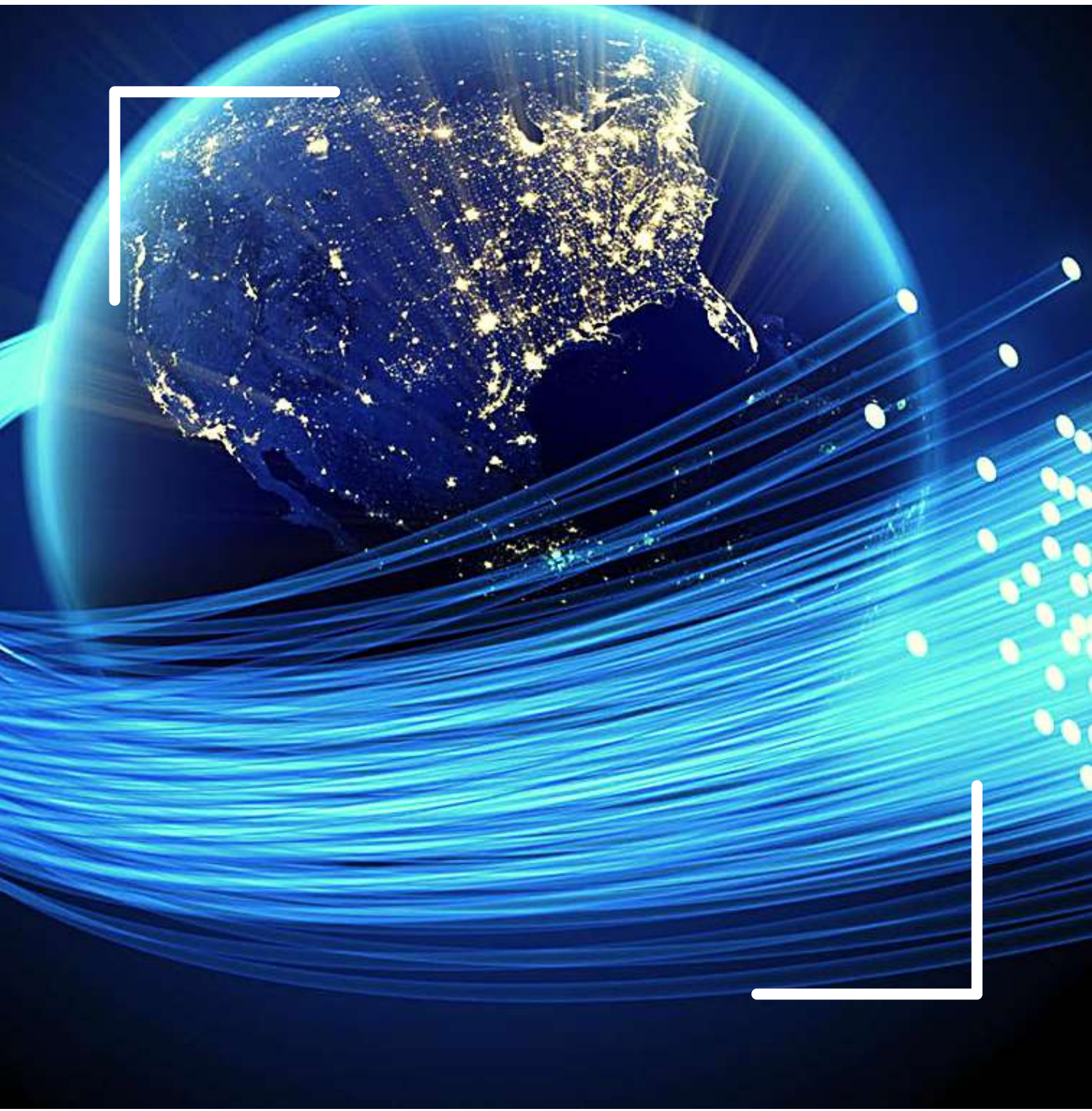
DN	400x400 carré	400x400 rond
Ref	REGXASSXLYDECXC	REGXASSXLYDECXR

Square manhole cover



DN	500x500	600x600	700x700
Ref	HC500XB125	HC600XB125	HC700XB125

Dry networks



PVC SHEATHS

- Alma rigid PVC (PVC-U) pipes for cable protection. They are made of polyvinyl chloride with high-quality additives, with smooth inner and outer walls, orange color and with continuous and indelible marking.
- Reference standards: EN1329-1

PRODUCT LINES :

- Nominal diameters: DN50,63,90,110, 125,160,200
- Overall straight length: 6m



ADVANTAGES :

- ✓ Resistance to shock, abrasion, and corrosion.
- ✓ Tightness and speed of implementation.
- ✓ Dielectric, insulator.
- ✓ 100% recyclable.
- ✓ Flexibility.
- ✓ Customer satisfaction.



HDPE SHEATHS

Black HDPE sheaths with red marking strips for the protection of buried electrical cables (high and low voltage) and optical fibers.

- Reference standards: EN 12201/50086-2-4

PRODUCT LINES :

- Nominal diameters:
 - DN 75, 90, 110, 125, 160, 200
- SDR:
 - 11-13.6-17-26
- PN:
 - 16-12.5-10-6
- Conditioning :
 - In coils and/or straight lengths depending on the diameter.



ADVANTAGES :

- Lightness, ease of implementation.
- Mechanical, abrasion and corrosion resistance.
- Chemical inertness under normal conditions of use.
- Excellent electrical insulator.



HDPE OPTICAL FIBER SHEATHING

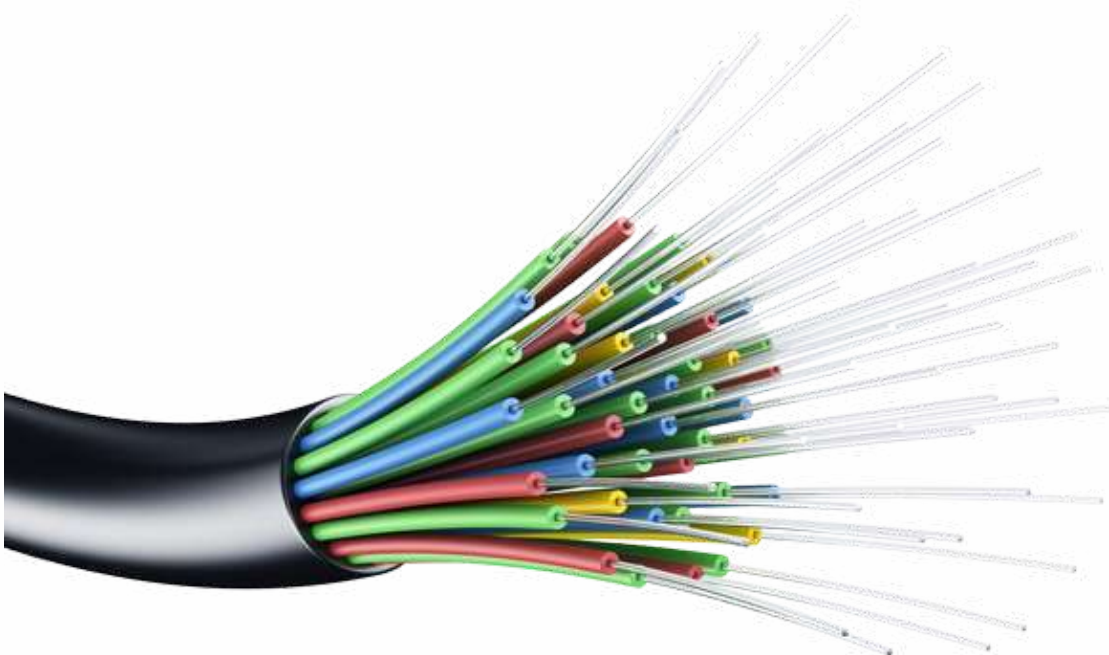
Black HDPE sheaths with green marking strips for fiber optic or electrical cable protection.

PRODUCT LINES :

- Nominal diameters: DN32, 40, 50, 63
- SDR: 11 - 13.6 - 17
- PN: 16-12.5-10
- Forms: In coils or drums

ADVANTAGES :

- Lightness, ease of implementation.
- Mechanical, abrasion and corrosion resistance.
- Chemical inertness under normal conditions of use.
- Excellent electrical insulator.
- Perforation resistance.
- Stability against ultraviolet rays.



THEY TRUST US





OUR REFERENCES







NOTES

.....

.....

.....

.....

.....

.....

.....

.....

.....

.....

.....

.....

.....

.....

.....

.....

.....

.....

.....

.....

.....



Every drop of water counts

MOROCCAN MANUFACTURE OF PUBLIC EQUIPMENT A.S.

HEAD OFFICE AND FACTORY:

**LAKRIMATE 1&2, Douar Lassilat, Commune of Sahel Ouled Hriz
HAD SOUALEM - 26400 MOROCCO**

reception@alma.ma
contact@alma.ma

www.alma.ma

(+212) (0)5 22 99 49 50
(+212) (0)5 22 99 51 52

Follow our news

